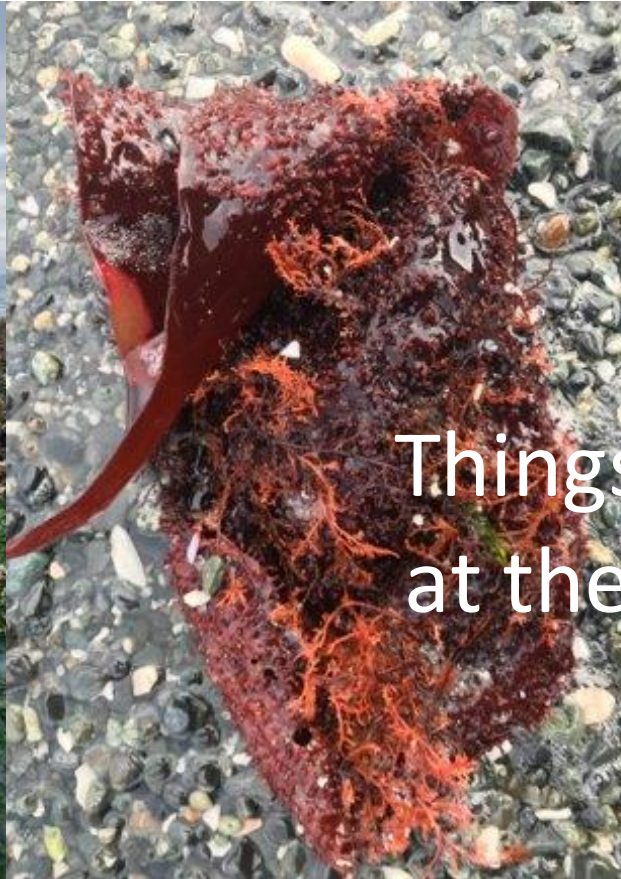




Gabe Moore Art Parents

A scenic landscape photograph of a beach at sunset. The sky is filled with soft, white clouds, and the sun is low on the horizon, casting a warm orange glow across the sky and reflecting on the calm water. The foreground shows a dark, pebbly beach with some driftwood and seaweed. In the background, there are dark silhouettes of trees and distant mountains. A large, white, diamond-shaped graphic is overlaid in the center of the image, containing the text "BC Environment".

BC Environment



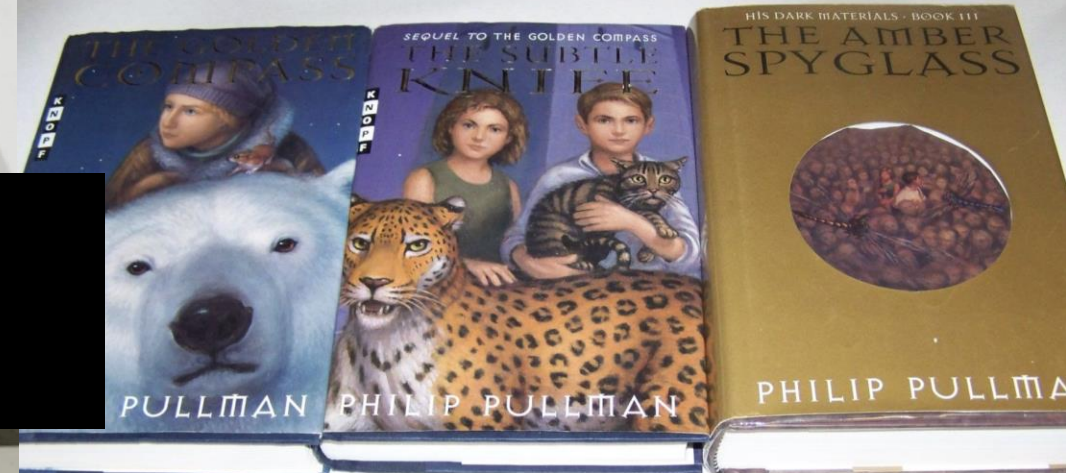
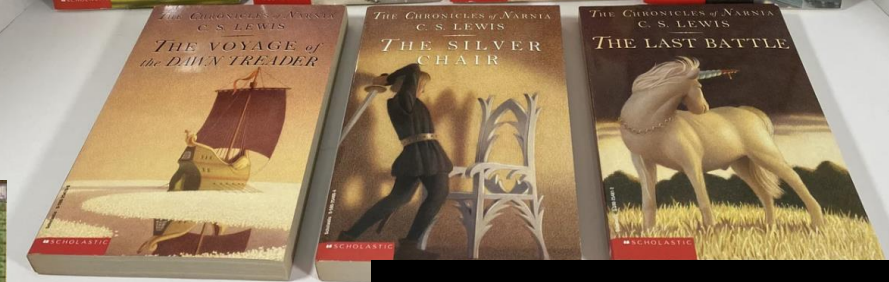
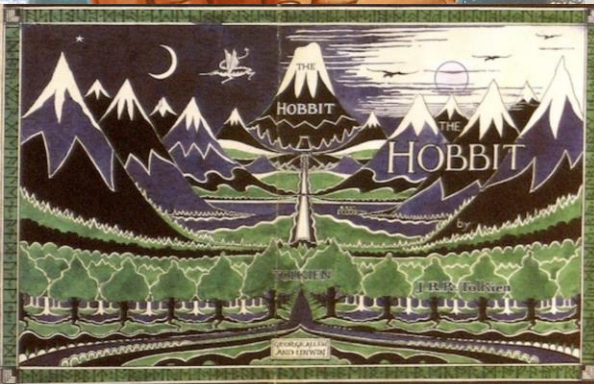
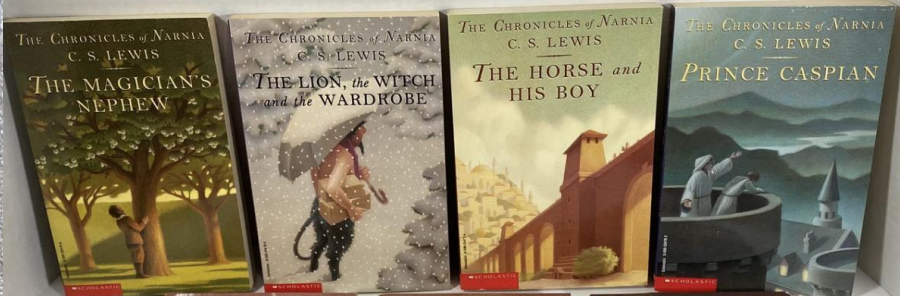
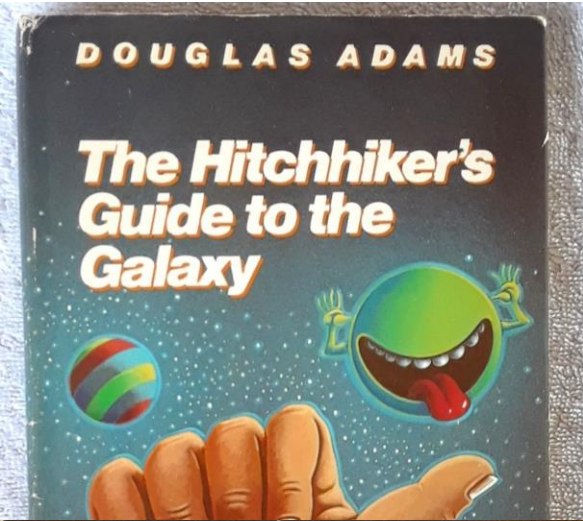
Things Found
at the Ocean



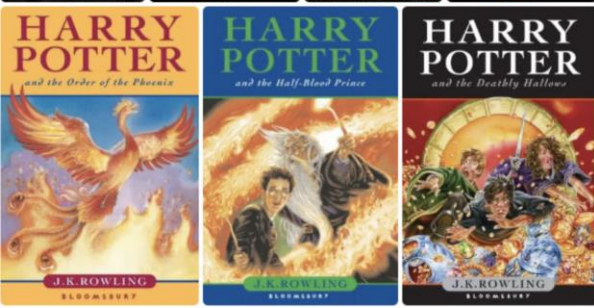
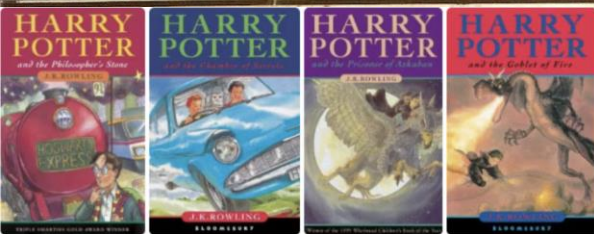
Land Formations



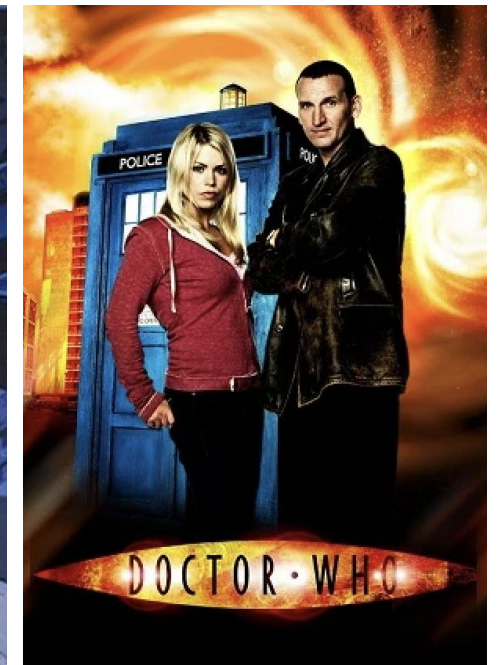
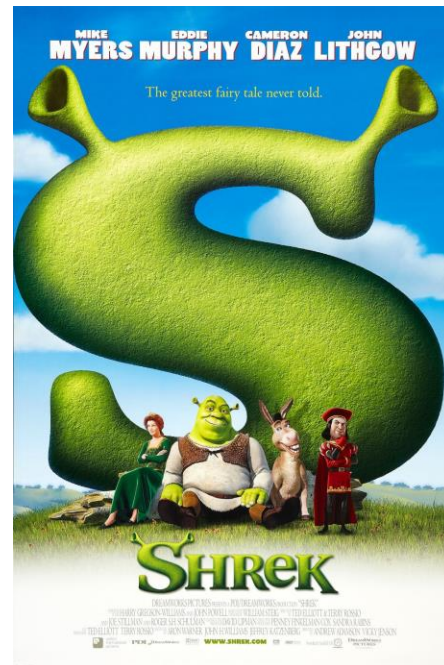
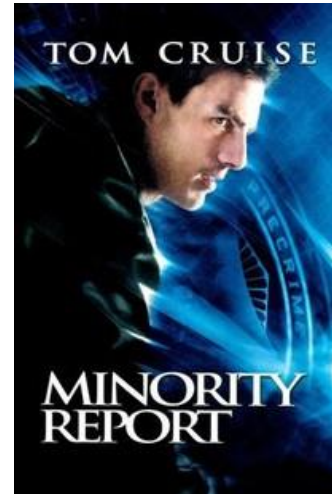




Childhood Literature

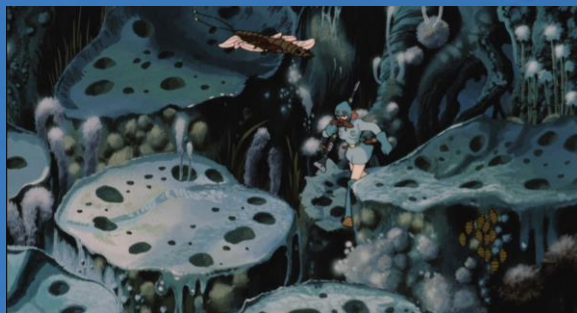


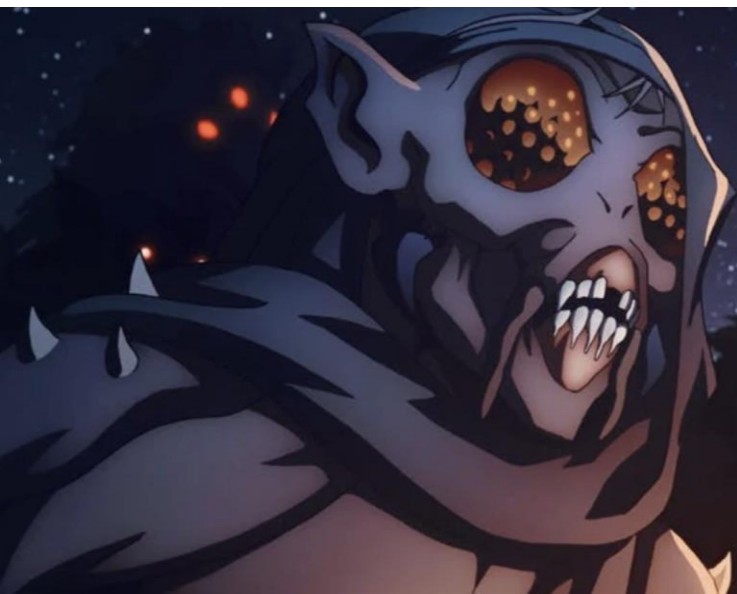
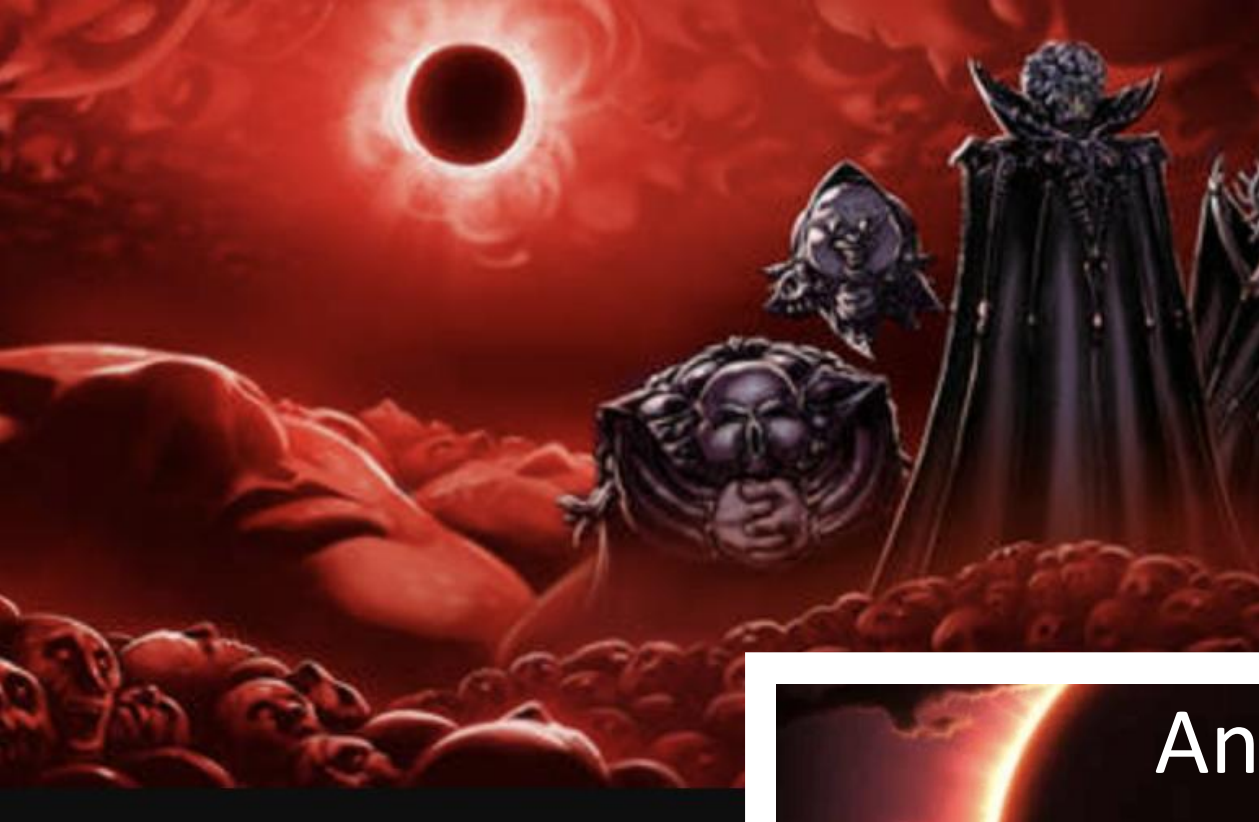
Early TV Shows & Movies



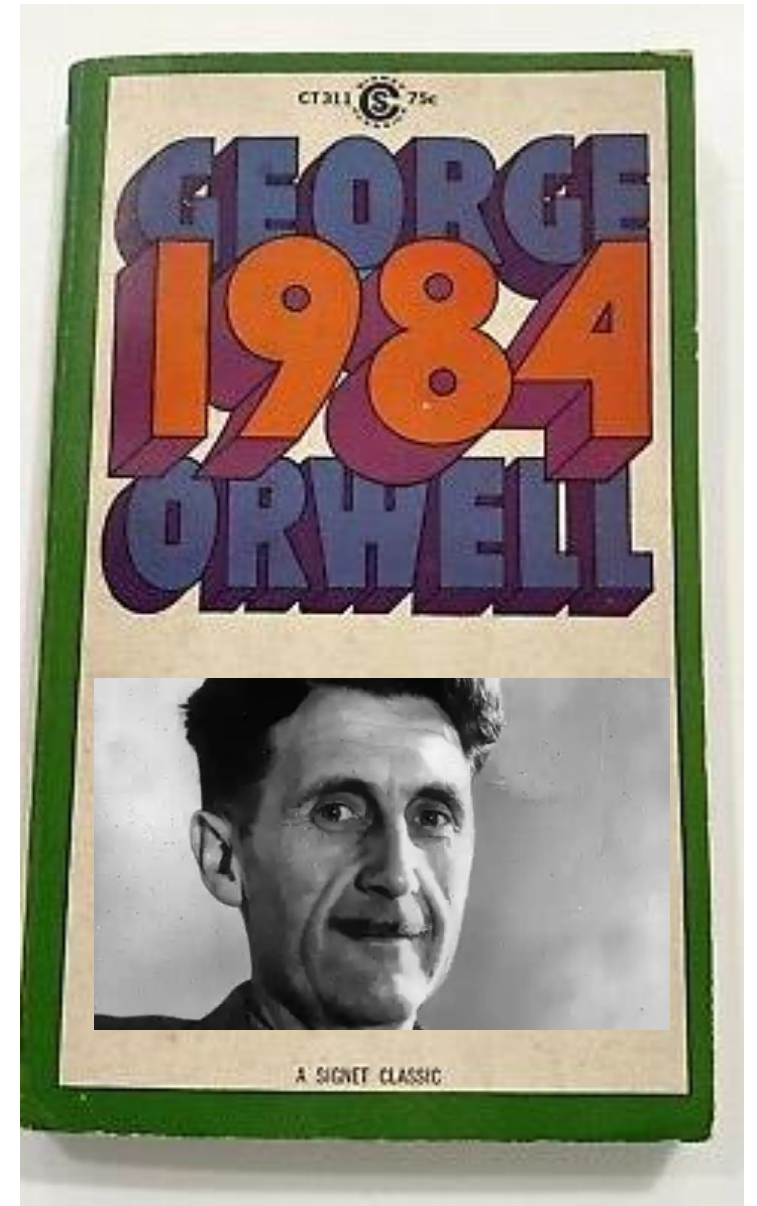
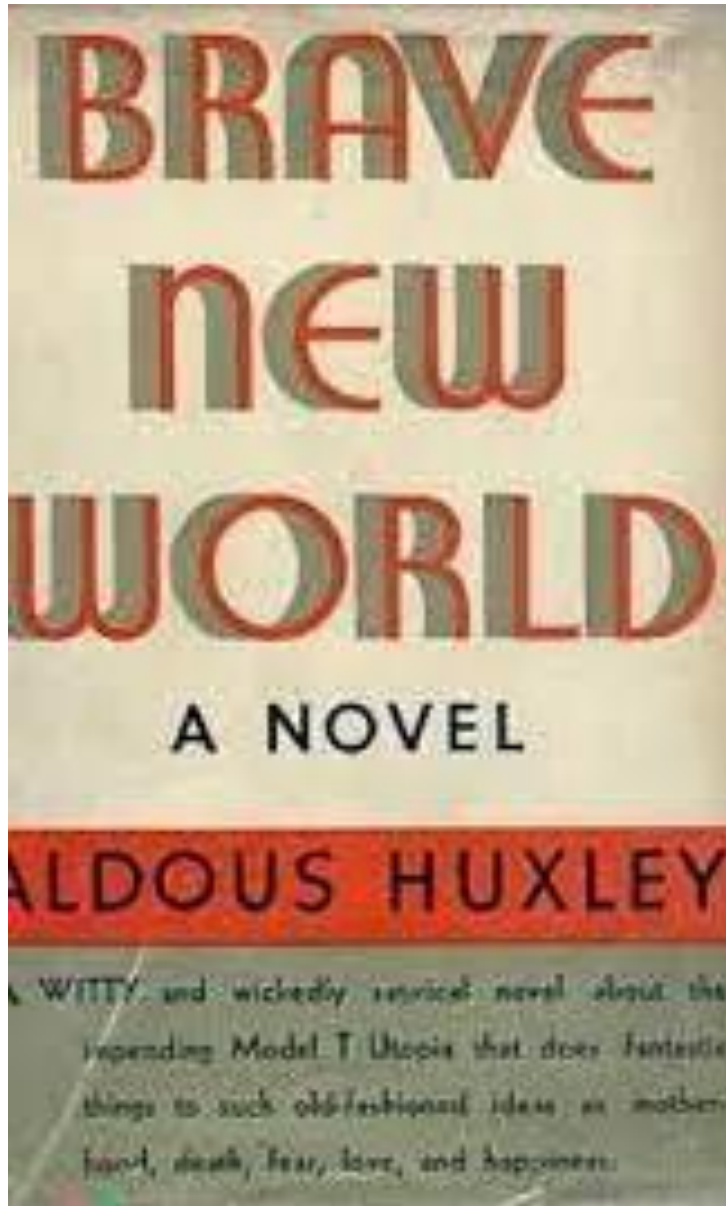


スタジオジブリ作品 STUDIO GHIBLI





Stories of Dystopia & Utopia







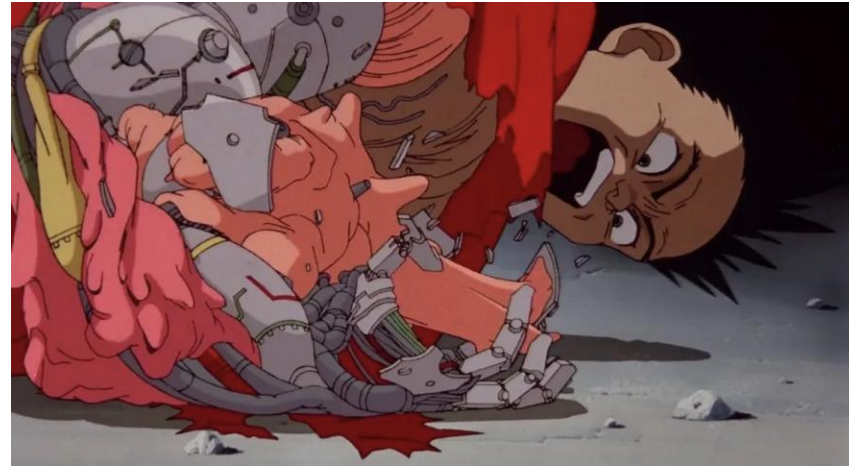
Music



Sophie



KRAZY! The Delirious World of Anime + Comics + Video Games + Art Exhibition, Vancouver Art Gallery, curated by Bruce Grenville and presented from May 17 to September 7, 2008



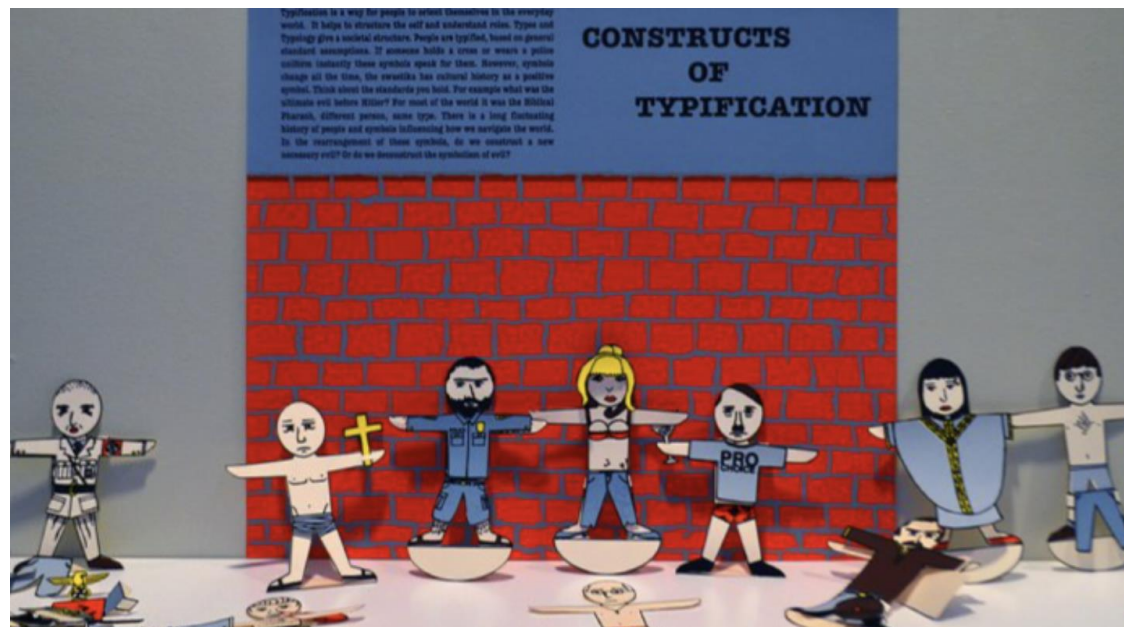
A microscopic image showing numerous large, round lymphoid cells with dark, dense nuclei and prominent, clear, circular halos (perinuclear clearing). These cells are characteristic of Burkitt's lymphoma. The background is a light blue/purple stain, and there are some smaller, less distinct cells and debris visible.

Burkitt's Lymphoma



Layered Democracy, Exhibition at the Comox Valley Art Gallery, 2014

Lukas Roy - *Typification* is a tool for structuring your world and organizing yourself, I want to draw attention to it through play. The paper dolls I made are the little people whom we typify. Education and experience is easier with a toy, it illustrates how naturally we make the decisions we do. To play with paper dolls is funny - I want you to laugh.



Lukas Roy, *Constructs of Typification*, 2014

A photograph of a modern building with a prominent wooden pergola structure over the entrance. The building has large windows and a steep, dark roof. The ground is covered in snow, and the scene is brightly lit, suggesting a sunny day. The text "CVAG" is overlaid in the center of the image.

CVAG

Yayoi Kusama



Flower QQ2, 1954 Pastel, tempera, and ink on paper 16 $\frac{3}{4}$ x 13 $\frac{3}{4}$ in

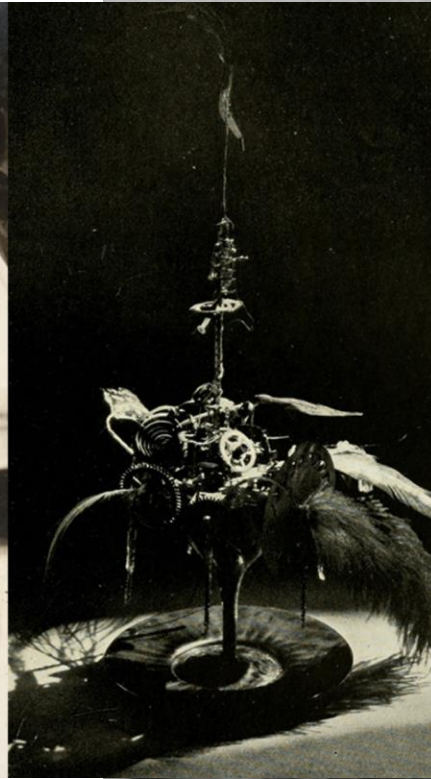


Mississippi River, 1960



Flower Chair, 1980-2000, stuffed cotton work gloves, wood and paint, 34 x 26 $\frac{1}{2}$ x 30in

Baroness Elsa von Freytag-Loringhoven

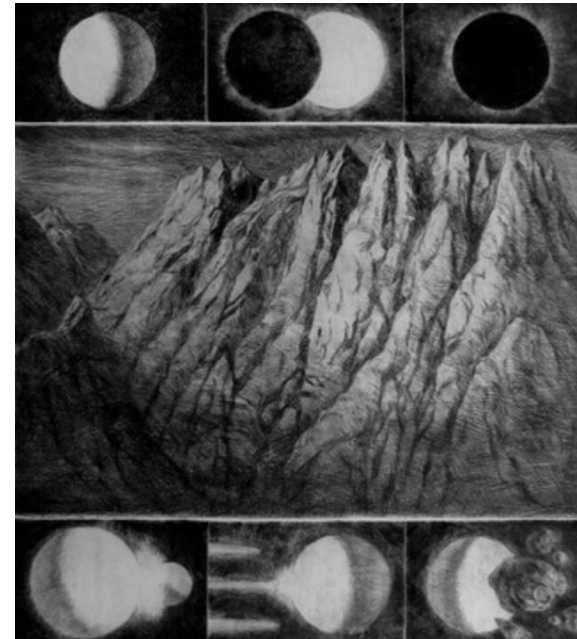


The unknown inventor of the readymade

Clive Powsey



Study For An Orgy, 2016, drypoint-watercolour-spray-paint, paper: stonehenge, varied, 45x30cm



Matter and Gravity, 18x20in., drypoint, artist's proof without watercolour tint



'stuff of life', drypoint, 15"x 20"

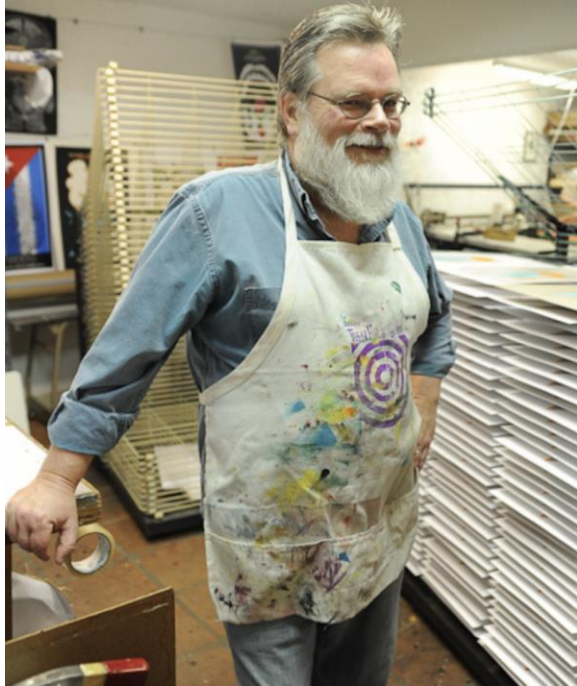


Vikky Alexander, Installation: *Extreme Beauty*,
Vancouver Art Gallery, 2019/2020



Frozen Wall, 2018, self adhesive Orofol #3105HT w/
matte laminate, size variable

Andy MacDougall





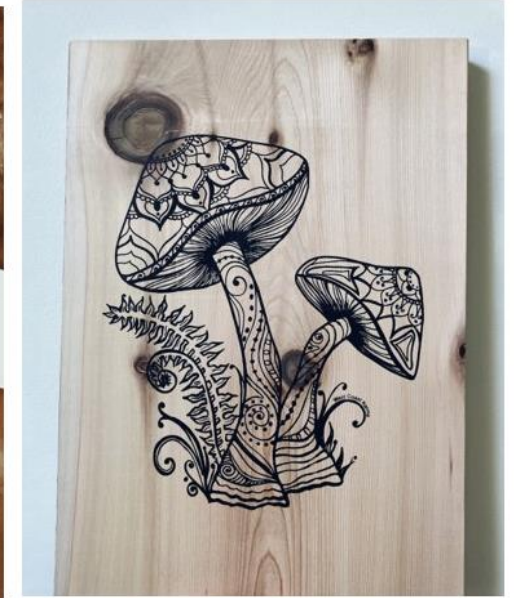
Indigenous Artists



David Neal, *Broken Promises*, Screen Print



George Littlechild, *Mother Earth Protector of the Tree Spirits*, 2018, Painting



Gabe Moore, Hand Printed for Wachiay Studio, Courtenay, BC, 2019 – 2021, Single, Multi – colour, Blends, Water base Ink



Gabe Moore, Live Screen Print Workshops at the Comox Valley Art Gallery, Courtenay, BC, 2020 - 2021



Gabe Moore, *Goose Stain Print* (Personal Brand), 2019 - 2022, Screen Print, Dimensions Vary